

PARTS CATALOG

CONTENTS

A510=EC157 / A520=EC156

EC156

EC157

Casing Parts	Pg1
Internal Parts-1	Pg2
Internal Parts-2	Pg3
Optical Unit	Pg4
Fuse	Pg5
Accessories-1	Pg6
Accessories-2	Pg7
Accessories-3	Pg8
Service Tools-1	Pg9
Service Tools-2	Pg10

CLASS凡例

- A: 使用頻度 高
- B: 使用頻度 中
- C: 使用頻度 低
- D: 安全規格部品
- E: 消耗部品
- F: 標準ネジ、ワッシャー
- S: 供給制限品
- Y: サービス工具

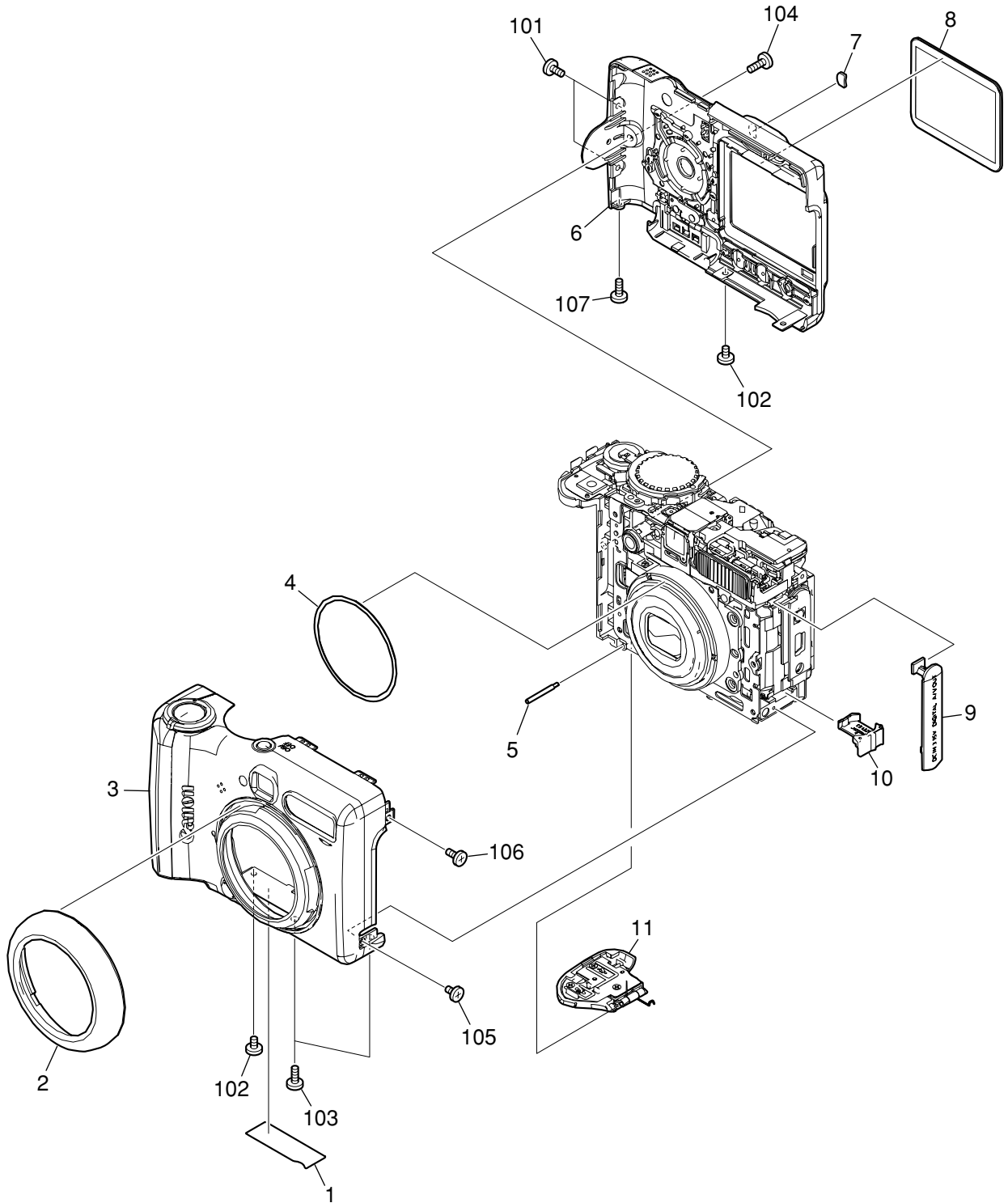
Category of CLASS

- A: Frequency of use: High
- B: Frequency of use: Middle
- C: Frequency of use: Low
- D: Safety-related critical parts
- E: Consumable parts
- F: Standard screws and washers
- S: Supply of the parts is limited
- Y: Service Tools

CAUTION

⚠ がついている部品は安全上重要な部品です。交換時は、必ず指定の部品を使用してください。
Especially critical parts in the power circuit block should not be replaced with other marks.
Critical parts are marked with ⚠ in this parts list

Casing Parts

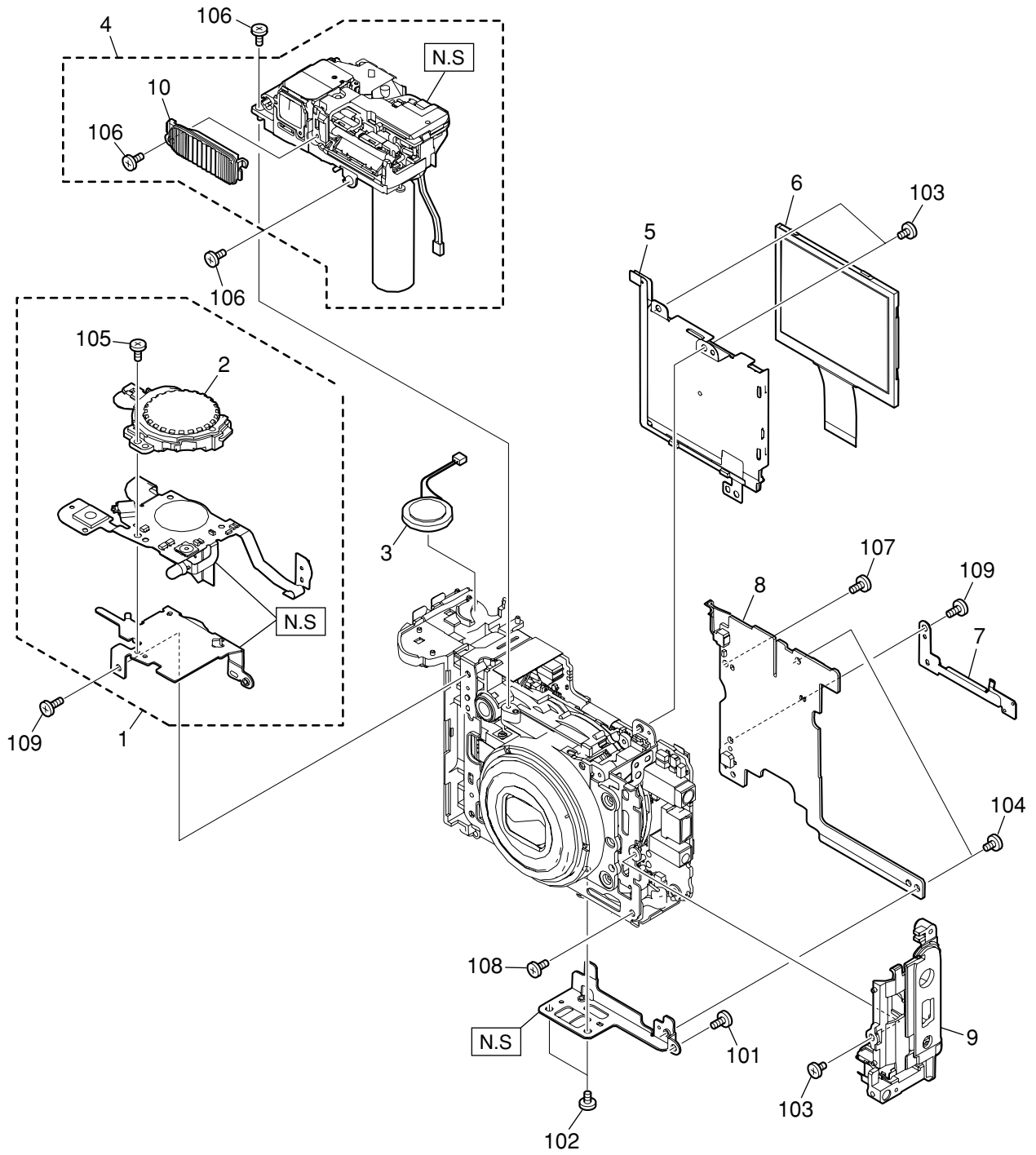


PARTS LIST

SYMBOL	PARTS NO.	CLASS	QTY	DESCRIPTION	REMARKS
1	CY1-6395-000	B	1	PLATE, BODY NUMBER	EC156JAPAN
	CY1-6396-000	B	1	PLATE, BODY NUMBER	EC157JAPAN
	CY1-6407-000	B	1	PLATE, BODY NUMBER	EC156MALAYSIA
	CY1-6408-000	B	1	PLATE, BODY NUMBER	EC157MALAYSIA
2	CM1-2751-000	B	1	BAYONET CAP UNIT	EC156
	CM1-2857-000	B	1	BAYONET CAP UNIT	EC157 (CP)
	CM1-2867-000	B	1	BAYONET CAP UNIT	EC157 (CG)
	CM1-2972-000	B	1	BAYONET CAP UNIT	EC157 (DG)
3	CM1-2761-000	B	1	COVER UNIT, FRONT	EC156
	CM1-2860-000	B	1	COVER UNIT, FRONT	EC157(CP)
	CM1-2870-000	B	1	COVER UNIT, FRONT	EC157(CG)
	CM1-2975-000	B	1	COVER UNIT, FRONT	EC157(DG)
4	CD3-3021-000	C	1	SHEET, LENS BARREL	
5	CD3-3279-000	C	1	SHAFT, BATTERY COVER	
6	CM1-2757-000	B	1	COVER UNIT, REAR	EC156
	CM1-2858-000	B	1	COVER UNIT, REAR	EC157 (CP)
	CM1-2868-000	B	1	COVER UNIT, REAR	EC157 (CG)
	CM1-2973-000	B	1	COVER UNIT, REAR	EC157 (DG)
7	CD3-3285-000	B	1	COVER, HOLE	
8	CD3-3286-000	B	1	WINDOW, LCD	
9	CD3-3251-000	B	1	COVER, JACK	
10	CD3-3252-000	B	1	HOLDER, DATA BATTERY	
11	CM1-2756-000	B	1	COVER UNIT, BATTERY	EC156
	CM1-2856-000	B	1	COVER UNIT, BATTERY	EC157 (CP)
	CM1-2866-000	B	1	COVER UNIT, BATTERY	EC157 (CG)
	CM1-2971-000	B	1	COVER UNIT, BATTERY	EC157 (DG)
101	CD3-3326-000	C	2	SCREW	
102	CD3-3327-000	C	2	SCREW	
103	CD3-3328-000	C	2	SCREW	
104	CD3-3329-000	C	1	SCREW	
105	XA4-5140-307	F	1	SCREW	
106	XA4-5170-407	F	1	SCREW	
107	XA4-9140-457	F	1	SCREW	

<p>CP: Champagne CG: Champagne Gold DG: Dark Gray</p>

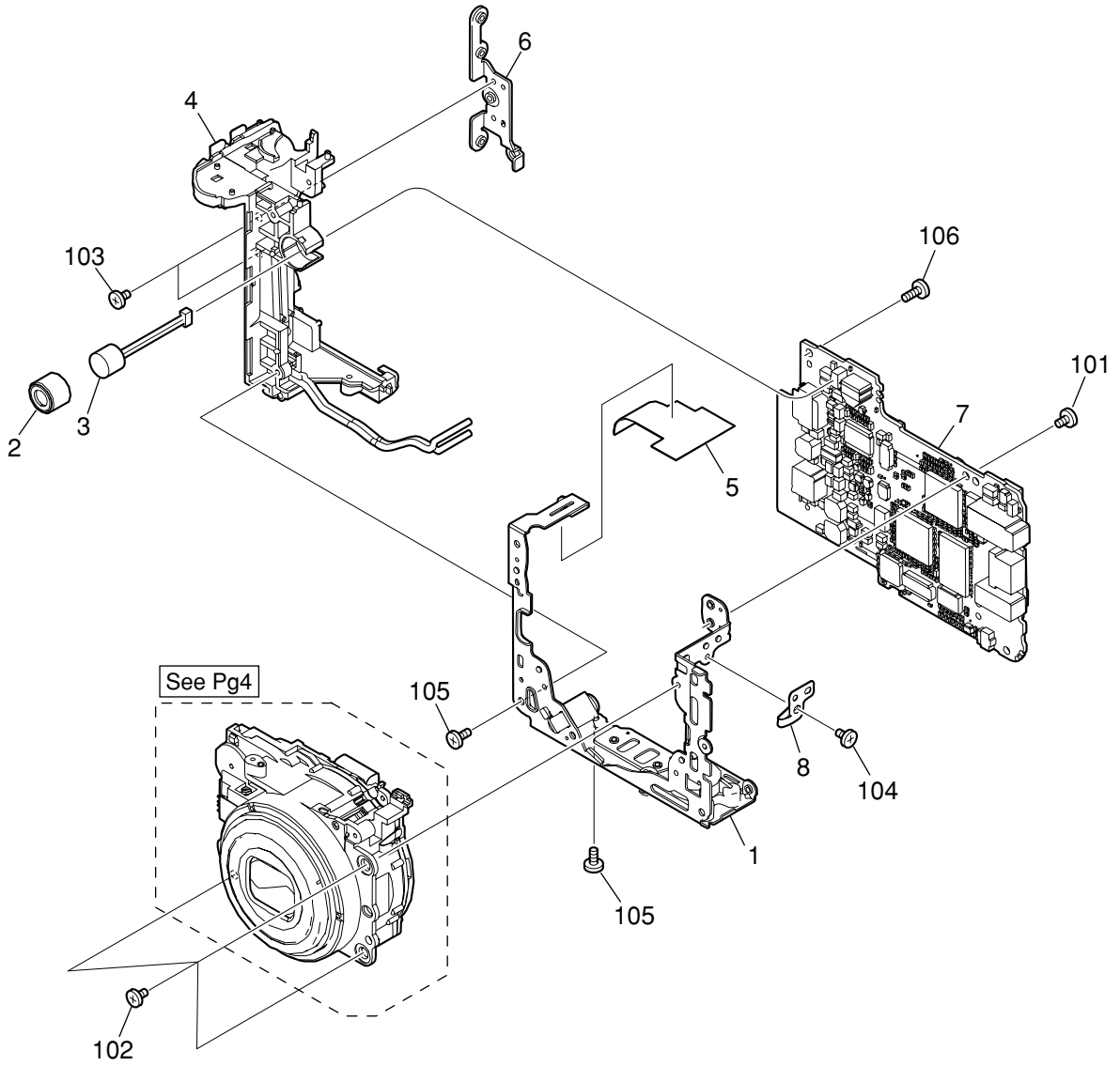
Internal Parts-1



PARTS LIST

SYMBOL	PARTS NO.	CLASS	QTY	DESCRIPTION	REMARKS
1	CM1-2758-000	C	1	FRAME UNIT, TOP	
2	CM1-2762-000	B	1	DIAL UNIT	
3	CM1-2741-000	C	1	SPEAKER UNIT	
4	CM1-2940-000	C	1	FLASH UNIT	
5	CM1-2760-000	C	1	BACK LIGHT UNIT	
6	CK9-1130-000	C	1	PANEL, LCD	
	CK9-1130-001	C	1	PANEL, LCD, SELECTION	
7	CD3-3260-000	C	1	COVER, CARD SLOT	
8	CM1-2735-000	C	1	PCB ASS'Y, OPERATION	
9	CM1-2754-000	B	1	COVER UNIT, SIDE	
10	CD3-2706-000	B	1	WINDOW, FLASH	
101	CD3-1447-000	C	1	SCREW	
102	CD3-3325-000	C	2	SCREW	
103	XA1-7170-207	F	3	SCREW	
104	XA1-7170-257	F	2	SCREW	
105	XA1-7170-307	F	1	SCREW	
106	XA4-9140-357	F	3	SCREW	
107	XA4-9170-307	F	1	SCREW	
108	XA4-9170-357	F	1	SCREW	
109	XA4-9170-407	F	2	SCREW	

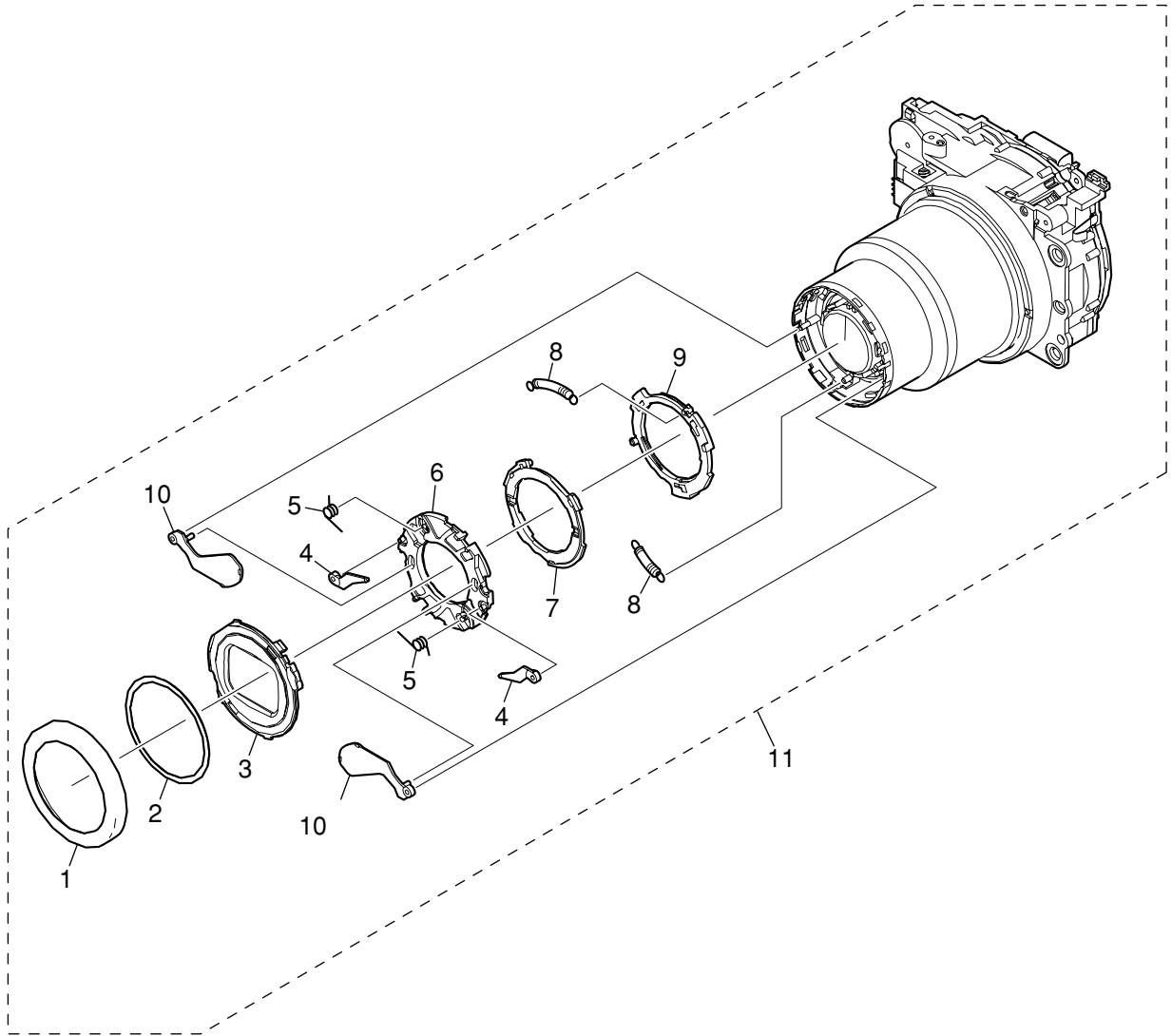
Internal Parts-2



PARTS LIST

SYMBOL	PARTS NO.	CLASS	QTY	DESCRIPTION	REMARKS
1	CM1-2759-000	C	1	FRAME UNIT, MAIN	
2	CD3-3248-000	C	1	BUSH, MICROPHONE	
3	CM1-2742-000	C	1	MICROPHONE UNIT	
4	CM1-2755-000	C	1	BATTERY BOX UNIT	
5	CD3-3313-000	C	1	SHIELD, NOISE	
6	CD3-3268-000	C	1	FRAME, STRAP	
7	CM1-2734-000	C	1	PCB ASS'Y, MAIN	EC156
	CM1-2803-000	C	1	PCB ASS'Y, MAIN	EC157
8	CD3-3262-000	C	1	SPRING, MAIN GND	
101	CD3-2936-000	C	1	SCREW	
102	CD3-3259-000	C	3	SCREW	NK GRIP
103	CD3-3325-000	C	2	SCREW	
104	XA1-7170-207	F	1	SCREW	
105	XA4-5170-357	F	2	SCREW	
106	XA4-9170-407	F	1	SCREW	

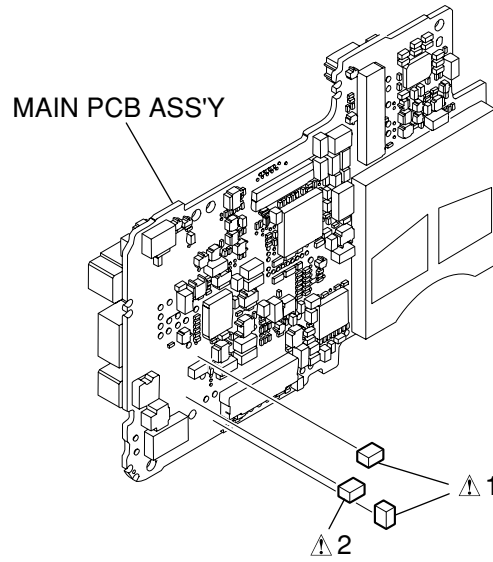
Optical Unit



PARTS LIST

SYMBOL	PARTS NO.	CLASS	QTY	DESCRIPTION	REMARKS
1	CD3-2697-000	B	1	CAP, FRONT	
2	CD3-2698-000	B	1	TAPE, FRONT CAP	SIZE (010)
3	CD3-2694-000	C	1	CAP, BARRIER	
4	CD3-2702-000	C	2	PLATE, BARRIER 2	
5	CD3-2703-000	C	2	SPRING, BARRIER PLATE 2	
6	CM1-2941-000	C	1	BARRIER BASE UNIT	
7	CD3-2696-000	C	1	RING, BARRIER DRIVE 2	
8	CD3-2700-000	C	2	SPRING, BARRIER	
9	CD3-2695-000	C	1	RING, BARRIER DRIVE 1	
10	CD3-2701-000	C	2	PLATE, BARRIER 1	
11	CM1-2893-000	C	1	OPTICAL UNIT	EC156
	CM1-2809-000	C	1	OPTICAL UNIT	EC157

Fuse

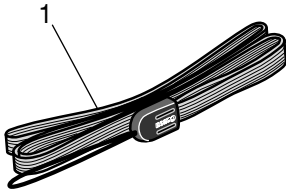


PARTS LIST

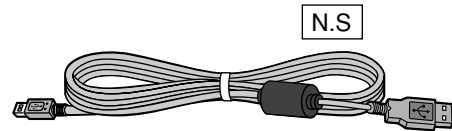
SYMBOL	PARTS NO.	CLASS	QTY	DESCRIPTION	REMARKS
△ 1	CY4-6074-000	C	2	FUSE, MATSU.DENKI UNHS206	FU2001, FU2002
△ 2	CY4-6081-000	C	1	FUSE, MATSU.DENKI UNHS203	FU2003

Accessories-1

Wrist Strap WS-200



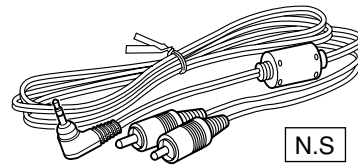
**USB Interface Cable
IFC-400PCU**



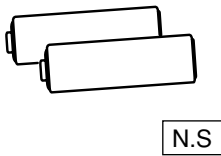
**Multi Media Card
MMC-16M**



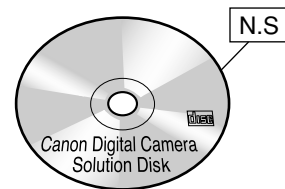
AV Cable AVC-DC300



Alkaline Batteries (X2)



**Canon Digital Camera
Solution Disk**



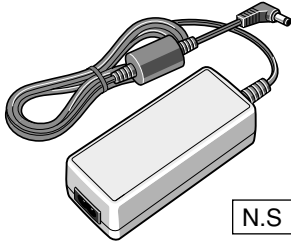
N.S. : N.S Stand for No Stock

PARTS LIST

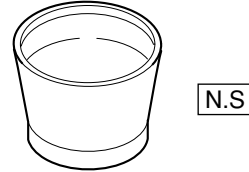
SYMBOL	PARTS NO.	CLASS	QTY	DESCRIPTION	REMARKS
1	C84-1060-000	B	1	STRAP, WRIST WS-200	

Accessories-2

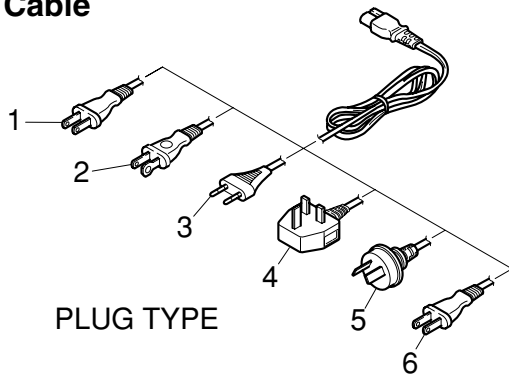
Compact Power Adapter CA-PS800



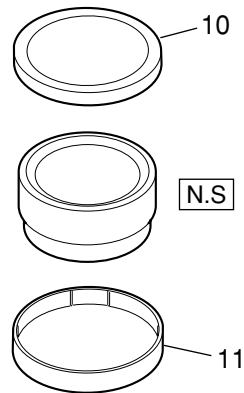
Conversion Lens Adapter LA-DC52F



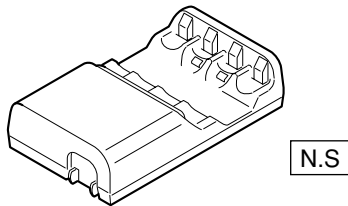
AC Cable



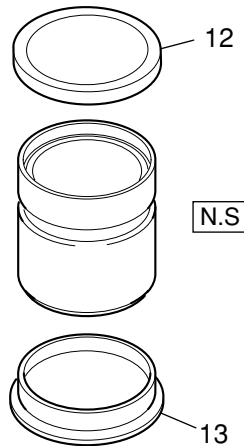
Wide Converter WC-DC52



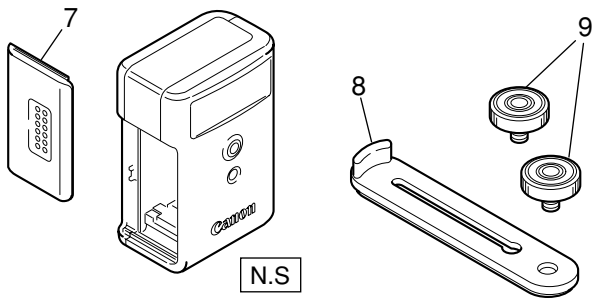
Battery Charger CB-4AH



Tele Converter TC-DC52A



High Power Flash HF-DC1



NiMH Battery NB4-200



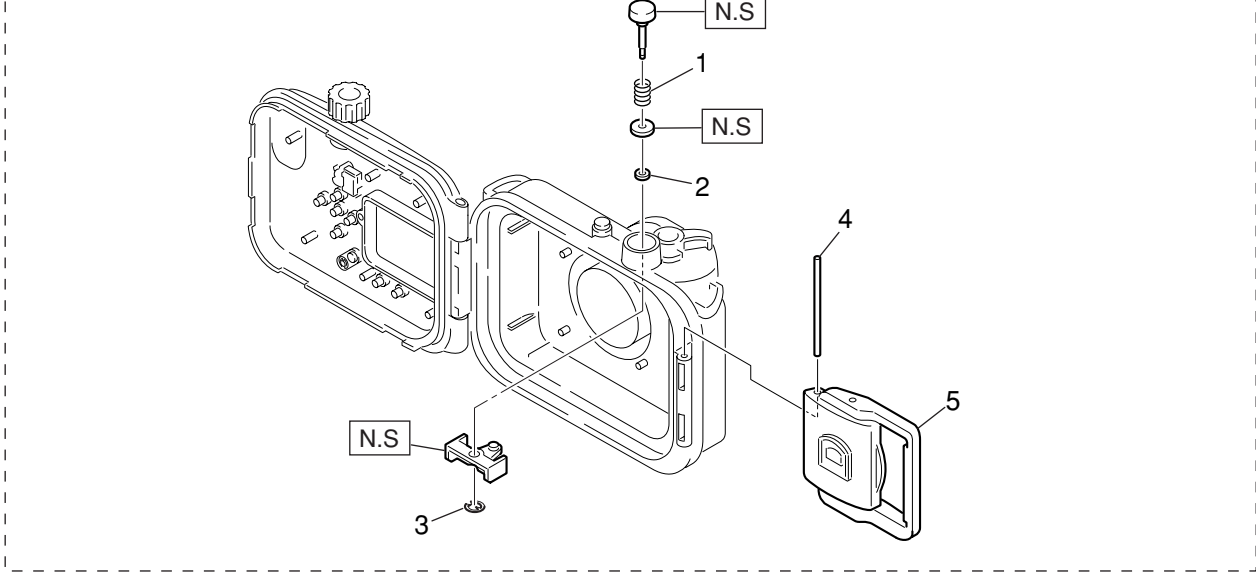
N.S. : N.S Stand for No Stock

PARTS LIST

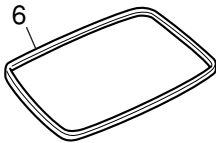
SYMBOL	PARTS NO.	CLASS	QTY	DESCRIPTION	REMARKS
1	D82-0641-000	C	1	CABLE, AC, JAPAN	FOR JAPAN
2	WT3-5063-000	C	1	CABLE, AC, USA	FOR USA, CANADA
3	D82-0643-000	C	1	CABLE, AC, EUROPE	FOR EUROPE, ASIA
4	D82-0644-000	C	1	CABLE, AC, UK	FOR ASIA
5	D82-0645-001	C	1	CABLE, AC, AUSTRALIA	FOR AUSTRALIA
6	WT3-5087-000	C	1	CABLE, AC, CHINA	FOR CHINA
7	CY1-6404-000	B	1	COVER, BATTERY	
8	CY1-6406-000	B	1	BRACKET	
9	CY1-6405-000	B	2	SCREW, TRIPOD	
10	CD1-3830-000	B	1	CAP, FRONT	
11	CD1-4042-000	B	1	CAP, REAR	
12	CD3-1741-000	B	1	CAP, FRONT	
13	CD3-1743-000	B	1	CAP, REAR	

Accessories-3

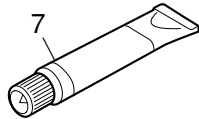
Waterproof Case WP-DC 60 N.S



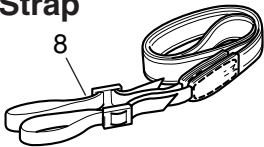
Waterproof Seal



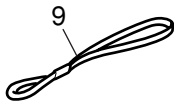
Silicone Grease



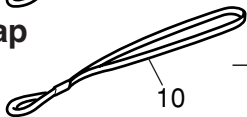
Neck Strap



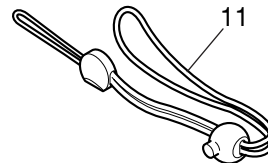
Strap



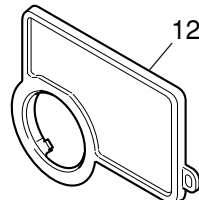
Large Strap



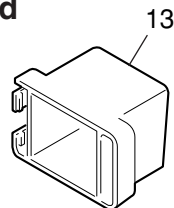
Wrist Strap



Diffusion Plate Unit



Hood

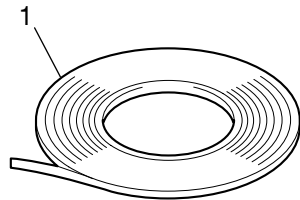


PARTS LIST

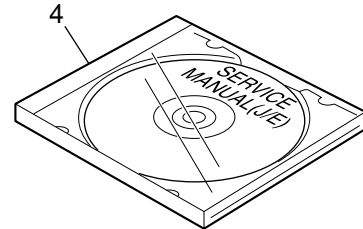
SYMBOL	PARTS NO.	CLASS	QTY	DESCRIPTION	REMARKS
1	CY1-6167-000	C	1	SPRING, COIL	
2	CY1-6252-000	C	1	O RING (P-3)	
3	CY1-6168-000	C	1	E RING	
4	CY1-6398-000	C	1	SHAFT, BUCKLE	
5	CY1-6397-000	C	1	BUCKLE ASS'Y	
6	CY1-6399-000	B	1	PACKING, RUBBER	
7	DY9-3029-000	C	1	SEALANT, TSK5542, SI.GREASE	
8	CY1-6099-000	B	1	STRAP, NECK	
9	CY1-6329-000	C	1	STRAP	FOR HOOD
10	CY1-6400-000	C	1	STRAP, LARGE	FOR DIFFUSION PLATE ASS'Y
11	CY1-6174-000	B	1	STRAP, WRIST	
12	CY1-6402-000	B	1	DIFFUSION PLATE ASS'Y	
13	CY1-6401-000	B	1	HOOD	

Service Tools-1

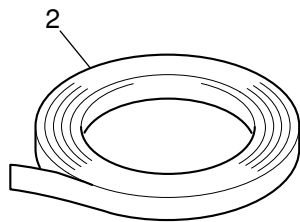
**Adhesive Tape SONY T4000
(Double-side Tape)**



Service Manual CD-ROM



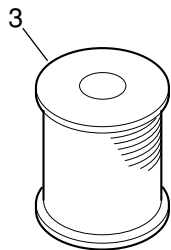
**Adhesive Tape 3M NO.56
(Electric Insulation Tape)**



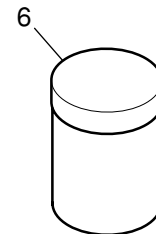
DIA Bond NO.1663G Black



Lead Free Solder RMA-98



Logenest Rambda A-74

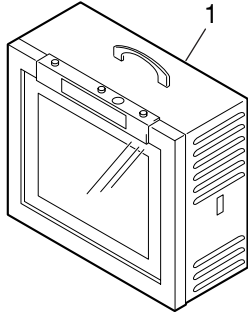


PARTS LIST

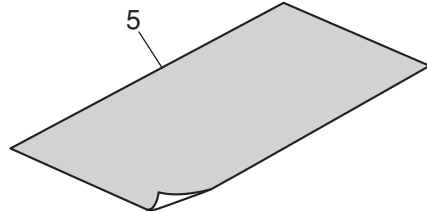
SYMBOL	PARTS NO.	CLASS	QTY	DESCRIPTION	REMARKS
1	CY4-6012-000	Y	1	ADHESIVE TAPE, SONY T4000	6mm × 50m roll
2	CY4-6018-000	Y	1	ADHESIVE TAPE, 3M NO.56	15mm × 66mm roll
3	CY9-4045-000	Y	1	SOLDER, LEAD FREE RMA-98	
4	CY8-4400-031	Y	1	CD-ROM, SERVICE MANUAL (J/E)	
5	CY9-8129-000	Y	1	BOND, DIABOND NO.1663G BLACK	200mml
6	CY9-8102-000	Y	1	LUBE, LOGNEST RAMBDA A-74	80g

Service Tools-2

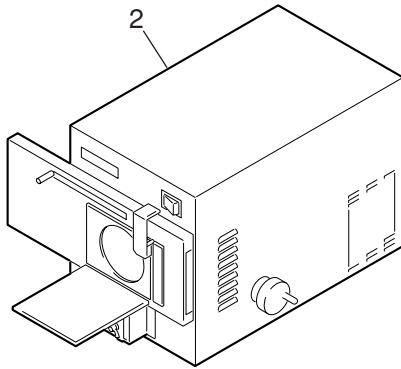
Color Viewer (5500° K)



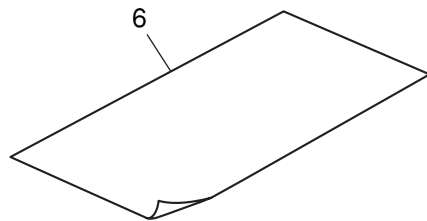
18% Gray Chart



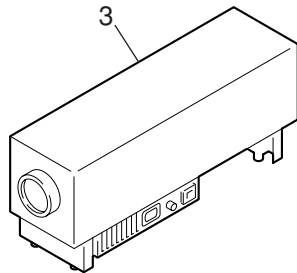
Brightness Box



AF Chart (1)

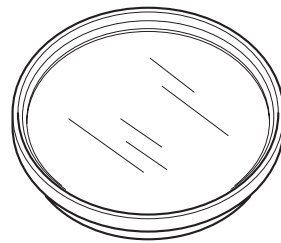
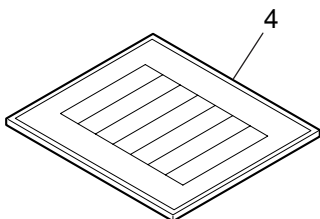


Infinity Collimator



- C-12 Filter _____ 7
- W-10 Filter _____ 8
- FL-W Filter _____ 9
- ND-4 Filter _____ 10

Standard Color Bar Chart



PARTS LIST

SYMBOL	PARTS NO.	CLASS	QTY	DESCRIPTION	REMARKS
1	CY9-1562-100	Y	1	COLOR VIEWER 5500K	FOR 100-120V AC
	CY9-1562-200	Y	1	COLOR VIEWER 5500K	FOR 200-240V AC
2	CY9-1566-100	Y	1	BRIGHTNESS BOX	FOR 100-120V AC
	CY9-1566-200	Y	1	BRIGHTNESS BOX	FOR 200-240V AC
3	CY9-1569-100	Y	1	COLLIMATOR, INFINITY	FOR 100-120V AC
	CY9-1569-200	Y	1	COLLIMATOR, INFINITY	FOR 200-240V AC
4	DY9-2002-000	Y	1	COLOR BAR CHART	
5	CY9-1563-000	Y	1	CHART, 18% GRAY	
6	CY9-1583-000	Y	1	CHART, AF (1)	
7	CY9-1555-000	Y	1	FILTER, C-12 (58MM)	
8	CY9-1556-000	Y	2	FILTER, W-10 (58MM)	
9	CY9-1557-000	Y	1	FILTER, FL-W (58MM)	
10	CY9-1553-000	Y	1	FILTER, ND-4 (58MM)	